

EXPANDED PROFILE

2000-2010 Census, 2016 Estimates with 2021 Projections

Calculated using Weighted Block Centroid from Block Groups

Lat/Lon: 33.8062/-85.7608

RF5

364-422 AL-21	1 mi radius		3 mi radius		5 mi radius	
Jacksonville, AL 36265						
Population						
Estimated Population (2016)	5,534		14,657		21,948	
Projected Population (2021)	5,379		14,265		21,256	
Census Population (2010)	5,709		14,954		22,262	
Census Population (2000)	3,670		10,537		17,448	
Projected Annual Growth (2016 to 2021)	-155	-0.6%	-392	-0.5%	-692	-0.6%
Historical Annual Growth (2010 to 2016)	-175	-0.5%	-297	-0.3%	-314	-0.2%
Historical Annual Growth (2000 to 2010)	2,038	5.6%	4,417	4.2%	4,814	2.8%
Estimated Population Density (2016)	1,762 <i>psm</i>		519 <i>psm</i>		280 <i>psm</i>	
Trade Area Size	3.14 <i>sq mi</i>		28.26 <i>sq mi</i>		78.51 <i>sq mi</i>	
Households						
Estimated Households (2016)	2,417		6,017		8,962	
Projected Households (2021)	2,446		6,088		9,039	
Census Households (2010)	2,390		5,896		8,726	
Census Households (2000)	1,558		4,129		6,840	
Estimated Households with Children (2016)	653	27.0%	1,461	24.3%	2,455	27.4%
Estimated Average Household Size (2016)	2.21		2.18		2.28	
Average Household Income						
Estimated Average Household Income (2016)	\$53,194		\$53,712		\$54,487	
Projected Average Household Income (2021)	\$60,036		\$60,985		\$61,561	
Estimated Average Family Income (2016)	\$62,636		\$68,992		\$67,185	
Median Household Income						
Estimated Median Household Income (2016)	\$36,829		\$37,539		\$39,747	
Projected Median Household Income (2021)	\$39,969		\$40,878		\$43,429	
Estimated Median Family Income (2016)	\$45,301		\$51,852		\$52,823	
Per Capita Income						
Estimated Per Capita Income (2016)	\$23,399		\$22,406		\$22,488	
Projected Per Capita Income (2021)	\$27,472		\$26,393		\$26,424	
Estimated Per Capita Income 5 Year Growth	\$4,073	17.4%	\$3,988	17.8%	\$3,937	17.5%
Estimated Average Household Net Worth (2016)	\$285,367		\$290,417		\$288,310	
Daytime Demos (2016)						
Total Businesses	221		446		587	
Total Employees	2,071		5,412		6,828	
Company Headquarter Businesses	-	-	-	-	-	-
Company Headquarter Employees	-	-	-	-	-	-
Employee Population per Business	9.4		12.1		11.6	
Residential Population per Business	25.0		32.9		37.4	

This report was produced using data from private and government sources deemed to be reliable. The information herein is provided without representation or warranty.

EXPANDED PROFILE

2000-2010 Census, 2016 Estimates with 2021 Projections

Calculated using Weighted Block Centroid from Block Groups

Lat/Lon: 33.8062/-85.7608

RF5

364-422 AL-21

Jacksonville, AL 36265

1 mi radius

3 mi radius

5 mi radius

Race & Ethnicity

White (2016)	3,936	71.1%	10,277	70.1%	16,521	75.3%
Black or African American (2016)	1,268	22.9%	3,635	24.8%	4,361	19.9%
American Indian or Alaska Native (2016)	23	0.4%	68	0.5%	109	0.5%
Asian (2016)	117	2.1%	234	1.6%	302	1.4%
Hawaiian or Pacific Islander (2016)	7	0.1%	18	0.1%	29	0.1%
Other Race (2016)	50	0.9%	123	0.8%	171	0.8%
Two or More Races (2016)	135	2.4%	302	2.1%	454	2.1%
Not Hispanic or Latino Population (2016)	5,375	97.1%	14,287	97.5%	21,416	97.6%
Hispanic or Latino Population (2016)	159	2.9%	370	2.5%	532	2.4%
Not Hispanic or Latino Population (2021)	5,206	96.8%	13,861	97.2%	20,676	97.3%
Hispanic or Latino Population (2021)	173	3.2%	403	2.8%	580	2.7%
Not Hispanic or Latino Population (2010)	5,555	97.3%	14,600	97.6%	21,761	97.8%
Hispanic or Latino Population (2010)	154	2.7%	353	2.4%	501	2.2%
Not Hispanic or Latino Population (2000)	3,592	97.9%	10,337	98.1%	17,160	98.4%
Hispanic or Latino Population (2000)	79	2.1%	200	1.9%	288	1.6%
Projected Hispanic Annual Growth (2016 to 2021)	14	1.7%	33	1.8%	49	1.8%
Historic Hispanic Annual Growth (2000 to 2016)	80	6.4%	170	5.3%	244	5.3%

Age Distribution (2016)

Age Under 5	303	5.5%	682	4.7%	1,135	5.2%
Age 5 to 9 Years	337	6.1%	732	5.0%	1,206	5.5%
Age 10 to 14 Years	322	5.8%	746	5.1%	1,248	5.7%
Age 15 to 19 Years	401	7.2%	1,683	11.5%	2,171	9.9%
Age 20 to 24 Years	736	13.3%	2,639	18.0%	3,035	13.8%
Age 25 to 29 Years	460	8.3%	1,125	7.7%	1,657	7.5%
Age 30 to 34 Years	316	5.7%	750	5.1%	1,232	5.6%
Age 35 to 39 Years	318	5.7%	722	4.9%	1,180	5.4%
Age 40 to 44 Years	284	5.1%	674	4.6%	1,155	5.3%
Age 45 to 49 Years	287	5.2%	683	4.7%	1,141	5.2%
Age 50 to 54 Years	319	5.8%	721	4.9%	1,203	5.5%
Age 55 to 59 Years	328	5.9%	798	5.4%	1,305	5.9%
Age 60 to 64 Years	299	5.4%	700	4.8%	1,180	5.4%
Age 65 to 74 Years	461	8.3%	1,157	7.9%	1,880	8.6%
Age 75 to 84 Years	251	4.5%	596	4.1%	885	4.0%
Age 85 Years or Over	113	2.0%	248	1.7%	336	1.5%
Median Age	33.6		32.2		34.0	

Gender Age Distribution (2016)

Female Population	2,949	53.3%	7,746	52.8%	11,467	52.2%
Age 0 to 19 Years	685	23.2%	2,010	25.9%	2,951	25.7%
Age 20 to 64 Years	1,751	59.4%	4,537	58.6%	6,719	58.6%
Age 65 Years or Over	512	17.4%	1,199	15.5%	1,797	15.7%
Female Median Age	35.5		33.6		35.1	
Male Population	2,586	46.7%	6,911	47.2%	10,481	47.8%
Age 0 to 19 Years	678	26.2%	1,834	26.5%	2,809	26.8%
Age 20 to 64 Years	1,595	61.7%	4,274	61.8%	6,369	60.8%
Age 65 Years or Over	313	12.1%	803	11.6%	1,303	12.4%
Male Median Age	31.3		30.8		32.9	

This report was produced using data from private and government sources deemed to be reliable. The information herein is provided without representation or warranty.

EXPANDED PROFILE

2000-2010 Census, 2016 Estimates with 2021 Projections

Calculated using Weighted Block Centroid from Block Groups

Lat/Lon: 33.8062/-85.7608

RF5

364-422 AL-21	1 mi radius		3 mi radius		5 mi radius	
Jacksonville, AL 36265						
Household Income Distribution (2016)						
HH Income \$200,000 or More	47	1.9%	137	2.3%	190	2.1%
HH Income \$150,000 to \$199,999	58	2.4%	139	2.3%	197	2.2%
HH Income \$100,000 to \$149,999	215	8.9%	501	8.3%	783	8.7%
HH Income \$75,000 to \$99,999	264	10.9%	620	10.3%	987	11.0%
HH Income \$50,000 to \$74,999	308	12.7%	909	15.1%	1,511	16.9%
HH Income \$35,000 to \$49,999	420	17.4%	944	15.7%	1,279	14.3%
HH Income \$25,000 to \$34,999	278	11.5%	632	10.5%	992	11.1%
HH Income \$15,000 to \$24,999	326	13.5%	811	13.5%	1,145	12.8%
HH Income Under \$15,000	503	20.8%	1,323	22.0%	1,877	20.9%
HH Income \$35,000 or More	1,311	54.2%	3,251	54.0%	4,948	55.2%
HH Income \$75,000 or More	583	24.1%	1,398	23.2%	2,157	24.1%
Housing (2016)						
Total Housing Units	2,643		6,569		9,843	
Housing Units Occupied	2,417	91.5%	6,017	91.6%	8,962	91.1%
Housing Units Owner-Occupied	1,158	47.9%	2,893	48.1%	5,216	58.2%
Housing Units, Renter-Occupied	1,259	52.1%	3,125	51.9%	3,747	41.8%
Housing Units, Vacant	225	8.5%	552	8.4%	880	8.9%
Marital Status (2016)						
Never Married	1,524	33.3%	5,476	43.8%	6,714	36.6%
Currently Married	2,052	44.9%	4,679	37.4%	7,489	40.8%
Separated	199	4.4%	428	3.4%	909	5.0%
Widowed	323	7.1%	742	5.9%	1,071	5.8%
Divorced	473	10.3%	1,171	9.4%	2,175	11.8%
Household Type (2016)						
Population Family	3,828	69.2%	8,960	61.1%	15,241	69.4%
Population Non-Family	1,505	27.2%	4,147	28.3%	5,154	23.5%
Population Group Quarters	202	3.6%	1,549	10.6%	1,554	7.1%
Family Households	1,293	53.5%	3,069	51.0%	5,173	57.7%
Non-Family Households	1,125	46.5%	2,948	49.0%	3,789	42.3%
Married Couple with Children	346	16.9%	838	17.9%	1,502	20.1%
Average Family Household Size	3.0		2.9		2.9	
Household Size (2016)						
1 Person Households	857	35.4%	2,103	35.0%	2,815	31.4%
2 Person Households	780	32.3%	2,057	34.2%	3,141	35.0%
3 Person Households	382	15.8%	928	15.4%	1,445	16.1%
4 Person Households	255	10.5%	601	10.0%	983	11.0%
5 Person Households	100	4.1%	216	3.6%	384	4.3%
6 or More Person Households	45	1.8%	111	1.8%	194	2.2%
Household Vehicles (2016)						
Households with 0 Vehicles Available	97	4.0%	260	4.3%	425	4.7%
Households with 1 Vehicles Available	946	39.1%	2,275	37.8%	3,110	34.7%
Households with 2 or More Vehicles Available	1,374	56.8%	3,483	57.9%	5,427	60.6%
Total Vehicles Available	4,376		10,949		16,866	
Average Vehicles Per Household	1.8		1.8		1.9	

This report was produced using data from private and government sources deemed to be reliable. The information herein is provided without representation or warranty.

EXPANDED PROFILE

2000-2010 Census, 2016 Estimates with 2021 Projections

Calculated using Weighted Block Centroid from Block Groups

Lat/Lon: 33.8062/-85.7608

RF5

364-422 AL-21	1 mi radius		3 mi radius		5 mi radius	
Jacksonville, AL 36265						
Labor Force (2016)						
Estimated Labor Population Age 16 Years or Over	4,513		12,371		18,151	
Estimated Civilian Employed	2,385	52.9%	6,478	52.4%	9,584	52.8%
Estimated Civilian Unemployed	143	3.2%	450	3.6%	608	3.4%
Estimated in Armed Forces	31	0.7%	83	0.7%	103	0.6%
Estimated Not in Labor Force	1,953	43.3%	5,360	43.3%	7,856	43.3%
Unemployment Rate	3.2%		3.6%		3.4%	
Occupation (2010)						
Occupation: Population Age 16 Years or Over	2,298		5,941		8,893	
Management, Business, Financial Operations	220	9.6%	559	9.4%	792	8.9%
Professional, Related	528	23.0%	1,458	24.5%	1,967	22.1%
Service	437	19.0%	1,272	21.4%	1,840	20.7%
Sales, Office	612	26.6%	1,475	24.8%	2,183	24.5%
Farming, Fishing, Forestry	21	0.9%	66	1.1%	86	1.0%
Construct, Extraction, Maintenance	126	5.5%	340	5.7%	676	7.6%
Production, Transport Material Moving	353	15.4%	771	13.0%	1,350	15.2%
White Collar Workers	1,360	59.2%	3,492	58.8%	4,942	55.6%
Blue Collar Workers	938	40.8%	2,449	41.2%	3,951	44.4%
Consumer Expenditure (2016)						
Total Household Expenditure	\$110 M		\$275 M		\$414 M	
Total Non-Retail Expenditure	\$59.2 M	53.8%	\$148 M	53.8%	\$223 M	53.8%
Total Retail Expenditure	\$50.9 M	46.2%	\$127 M	46.2%	\$191 M	46.2%
Apparel	\$3.80 M	3.5%	\$9.50 M	3.5%	\$14.3 M	3.5%
Contributions	\$4.31 M	3.9%	\$10.9 M	4.0%	\$16.3 M	3.9%
Education	\$3.76 M	3.4%	\$9.43 M	3.4%	\$14.0 M	3.4%
Entertainment	\$6.05 M	5.5%	\$15.1 M	5.5%	\$22.8 M	5.5%
Food and Beverages	\$16.6 M	15.0%	\$41.3 M	15.0%	\$62.2 M	15.0%
Furnishings and Equipment	\$3.62 M	3.3%	\$9.05 M	3.3%	\$13.7 M	3.3%
Gifts	\$2.52 M	2.3%	\$6.34 M	2.3%	\$9.52 M	2.3%
Health Care	\$9.26 M	8.4%	\$23.0 M	8.4%	\$34.7 M	8.4%
Household Operations	\$2.90 M	2.6%	\$7.26 M	2.6%	\$11.0 M	2.6%
Miscellaneous Expenses	\$1.66 M	1.5%	\$4.15 M	1.5%	\$6.24 M	1.5%
Personal Care	\$1.44 M	1.3%	\$3.58 M	1.3%	\$5.39 M	1.3%
Personal Insurance	\$753 K	0.7%	\$1.89 M	0.7%	\$2.85 M	0.7%
Reading	\$243 K	0.2%	\$607 K	0.2%	\$912 K	0.2%
Shelter	\$22.7 M	20.6%	\$56.6 M	20.6%	\$85.2 M	20.6%
Tobacco	\$765 K	0.7%	\$1.89 M	0.7%	\$2.83 M	0.7%
Transportation	\$21.0 M	19.1%	\$52.5 M	19.1%	\$79.3 M	19.2%
Utilities	\$8.73 M	7.9%	\$21.7 M	7.9%	\$32.5 M	7.9%
Educational Attainment (2016)						
Adult Population Age 25 Years or Over	3,435		8,174		13,153	
Elementary (Grade Level 0 to 8)	227	6.6%	478	5.8%	696	5.3%
Some High School (Grade Level 9 to 11)	520	15.1%	1,004	12.3%	1,684	12.8%
High School Graduate	850	24.7%	1,927	23.6%	3,416	26.0%
Some College	679	19.8%	1,855	22.7%	3,261	24.8%
Associate Degree Only	249	7.2%	612	7.5%	1,010	7.7%
Bachelor Degree Only	557	16.2%	1,364	16.7%	1,906	14.5%
Graduate Degree	354	10.3%	935	11.4%	1,180	9.0%

This report was produced using data from private and government sources deemed to be reliable. The information herein is provided without representation or warranty.

EXPANDED PROFILE

2000-2010 Census, 2016 Estimates with 2021 Projections

Calculated using Weighted Block Centroid from Block Groups

Lat/Lon: 33.8062/-85.7608

RF5

364-422 AL-21

Jacksonville, AL 36265

Units In Structure (2010)

	1 mi radius		3 mi radius		5 mi radius	
1 Detached Unit	1,420	59.4%	3,448	58.5%	5,484	62.8%
1 Attached Unit	74	3.1%	127	2.2%	146	1.7%
2 to 4 Units	342	14.3%	649	11.0%	691	7.9%
5 to 9 Units	130	5.5%	344	5.8%	405	4.6%
10 to 19 Units	124	5.2%	454	7.7%	480	5.5%
20 to 49 Units	59	2.5%	248	4.2%	265	3.0%
50 or More Units	28	1.2%	62	1.1%	78	0.9%
Mobile Home or Trailer	212	8.9%	558	9.5%	1,165	13.4%
Other Structure	1	0.1%	5	0.1%	13	0.2%

Homes Built By Year (2010)

Homes Built 2005 or later	340	14.2%	824	14.0%	1,126	12.9%
Homes Built 2000 to 2004	268	11.2%	637	10.8%	829	9.5%
Homes Built 1990 to 1999	511	21.4%	1,232	20.9%	1,748	20.0%
Homes Built 1980 to 1989	356	14.9%	838	14.2%	1,356	15.5%
Homes Built 1970 to 1979	345	14.4%	868	14.7%	1,378	15.8%
Homes Built 1960 to 1969	170	7.1%	534	9.1%	866	9.9%
Homes Built 1950 to 1959	216	9.0%	517	8.8%	738	8.5%
Homes Built Before 1949	185	7.7%	446	7.6%	684	7.8%

Home Values (2010)

Home Values \$1,000,000 or More	1	0.1%	2	0.1%	4	0.1%
Home Values \$500,000 to \$999,999	15	1.3%	49	1.7%	64	1.3%
Home Values \$400,000 to \$499,999	4	0.4%	29	1.0%	37	0.7%
Home Values \$300,000 to \$399,999	20	1.7%	64	2.3%	142	2.8%
Home Values \$200,000 to \$299,999	242	21.1%	582	20.5%	802	15.8%
Home Values \$150,000 to \$199,999	216	18.8%	535	18.8%	912	18.0%
Home Values \$100,000 to \$149,999	300	26.1%	723	25.4%	1,306	25.7%
Home Values \$70,000 to \$99,999	135	11.7%	396	13.9%	790	15.6%
Home Values \$50,000 to \$69,999	104	9.0%	202	7.1%	358	7.0%
Home Values \$25,000 to \$49,999	64	5.5%	122	4.3%	243	4.8%
Home Values Under \$25,000	50	4.3%	137	4.8%	421	8.3%
Owner-Occupied Median Home Value	\$131,752		\$139,525		\$127,606	
Renter-Occupied Median Rent	\$398		\$416		\$418	

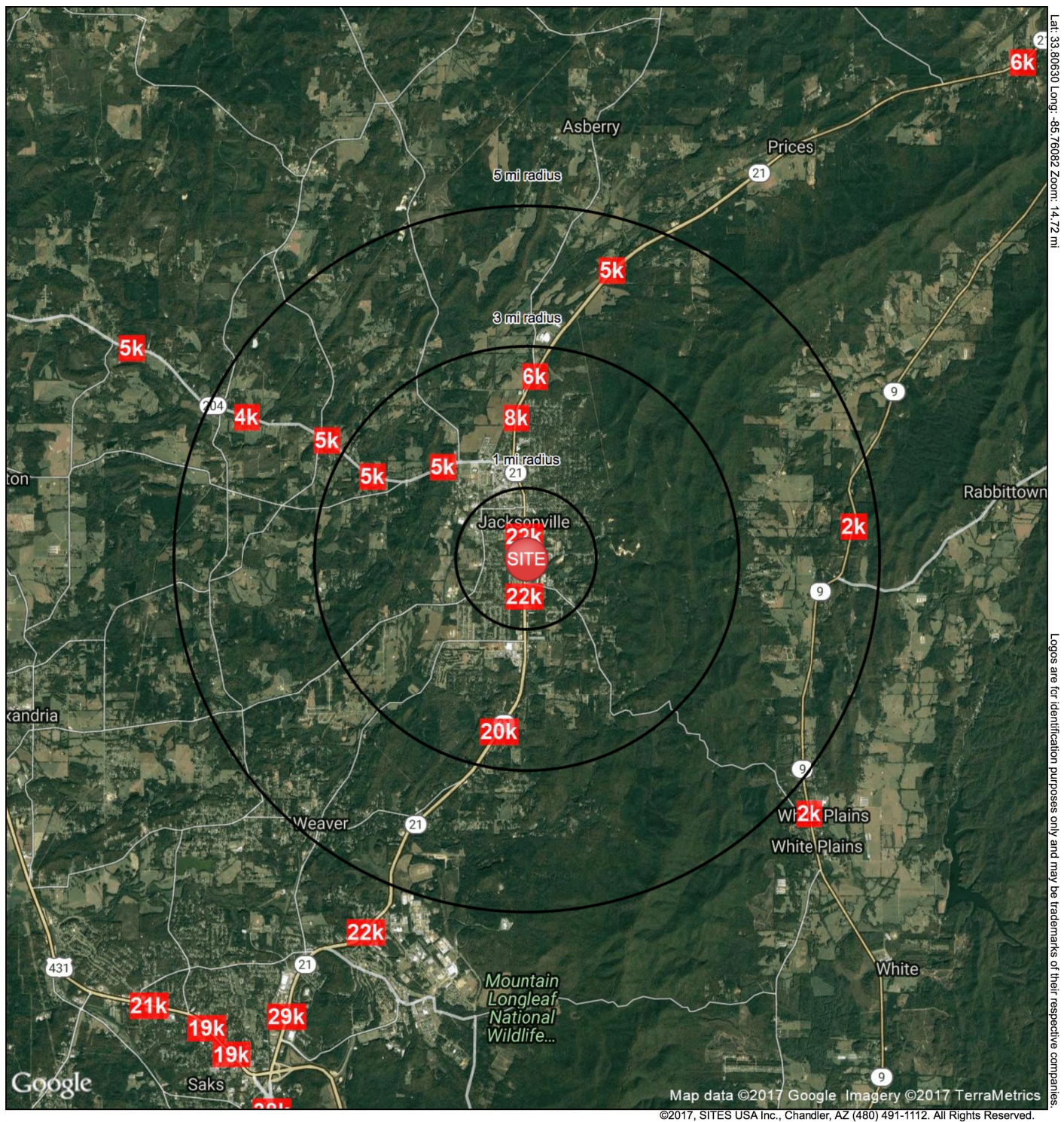
Transportation To Work (2010)

Drive to Work Alone	2,005	89.6%	4,964	86.6%	7,535	87.7%
Drive to Work in Carpool	154	6.9%	415	7.2%	640	7.5%
Travel to Work by Public Transportation	-	-	3	0.1%	16	0.2%
Drive to Work on Motorcycle	11	0.5%	14	0.2%	15	0.2%
Walk or Bicycle to Work	26	1.2%	107	1.9%	117	1.4%
Other Means	10	0.4%	40	0.7%	53	0.6%
Work at Home	33	1.5%	188	3.3%	220	2.6%

Travel Time (2010)

Travel to Work in 14 Minutes or Less	854	38.7%	2,059	37.1%	2,676	31.9%
Travel to Work in 15 to 29 Minutes	682	30.9%	1,825	32.9%	3,079	36.8%
Travel to Work in 30 to 59 Minutes	571	25.9%	1,438	25.9%	2,249	26.8%
Travel to Work in 60 Minutes or More	99	4.5%	222	4.0%	373	4.5%
Average Minutes Travel to Work	18.8		19.1		20.1	

This report was produced using data from private and government sources deemed to be reliable. The information herein is provided without representation or warranty.



619 Pelham Rd S
Jacksonville, AL 36265

January 2017